

Modern Day Whare

A Hawke's Bay farming family cherish their holiday time at Lake Tarawera.

Words **Soraya Nicholas** Photography **Kelvin Teixeira**



The dining table frame and bench seats were crafted for the family by Joe Rossiter, who makes all the gates and yards on their farm. It is one of four, which can all be pushed together to make one huge table for large-scale entertaining.



FORTY YEARS AGO A HAWKE'S BAY farming family, travelling with four young children in their caravan, visited friends at Lake Tarawera in Rotorua and fell in love with the pristine water and wilderness of the lakefront. By good fortune, an old bach on the water's edge of the same intimate bay was for sale. The deal was "walk-in/walk-out" and included furniture, bedding, the boat in the shed and even a Clarice Clift porcelain dinner set. After much deliberation, the bach was eventually purchased. Fast forward four decades and the four siblings have a waterfront section each, subdivided from the original property. With their parents in a neighbouring house on a large section, allowing the family tradition of holidaying together every summer to continue.

This home is built on one of those sections and is now the favourite destination of the eldest son and his family including their four children, aged 11-21 years. After years of the classic

Kiwi 'bach' experience of camping and squeezing around a small table, this new home has taken the word 'bach' to an entirely new level, able to accommodate extended family and friends with ease, whilst maintaining a barefoot, relaxed and comfortable atmosphere for all ages.

Designed by local NZIA Graduate member Fred Stevens of Architecture Aotearoa, the holiday home was intended to mould and weather into the landscape, with a creative twist. Simple materials combined with refined architecture have resulted in the creation of a dwelling at one with the heritage of the area. "My intention with all the homes I design is to make them respond to Aotearoa," explains Fred. "The homeowners have a spiritual connection, a real affinity, with this land, from the years their family has been visiting here. Because I live nearby, I understand how special it is, and how important it was to relate to the

The home looks out to the lake, where the children enjoy waterskiing and swimming daily.



THE SPECS

Rotorua
\$600,000 +
272 sq m



environment and history of the area.”

It was precisely this attitude that caused the homeowners to approach Fred, to interpret their design ideas. “We all agreed on the idea that it had to be chunky in style, and that it had to reflect the atmosphere of the bay. Incorporating timber from our farm in the Hawke’s Bay was also a non-negotiable inclusion.” Fred was more than pleased to pay homage to their farm, with his desire to be as “sustainable as possible with the materials used.” Rimu and Macrocarpa were milled as required on the farm, and then delivered to the site.

Builder Roland Tissink, owner of Tissink Builders, was given the task of working with the timber as he constructed the home. “He was fantastic, and he loved our passion for timber, and our understanding of it as a building product.” He was also open to the homeowners’ ideas, and his attention to detail and overall craftsmanship was exemplary.”

Originally, the homeowners’ intention for their new house was a very simple

“There is a resemblance to a Maori meeting house, with the thick poles and rope at the front of the house”.

– Designer Fred Stevens



The house faces south, which meant there were very specific design considerations to incorporate solar gain. The rear of the house, facing north, has a high roofline, and the basement, which sees no sun at all, is constructed from eco blocks. This creates a “chilly bin” effect, meaning when it’s heated, the heat stays in!





ABOVE Hardwearing surfaces make this an easy care holiday abode. Concrete floors are easy to keep clean, and also extend downstairs. **BELOW** The "basement" on the ground floor is the domain of the homeowners' children, with two queen bedrooms, two bunk rooms, a bathroom and a kitchenette.



are made from ply panels, finished with a light tea wash.

Despite treating it as the quintessential family bach, the homeowners style and taste is evident throughout. With huge bi-fold doors, energy efficient and sustainable building materials deployed, and a décor that is fresh and stylish all in the same breath, it is a special home that deserves the love it receives. This was highlighted by the home winning the National Award in the \$450,000 - \$650,000 category at the 2009 Master Builder House of the Year Awards, in recognition of outstanding excellence in workmanship and creativity.

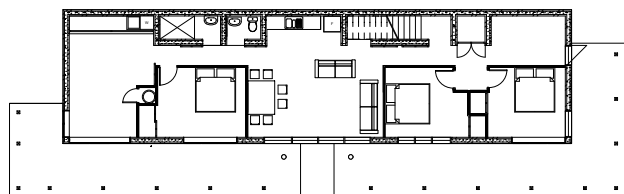
"We feel so privileged to have our holiday home here. Our respect and admiration for my husband's parents, in having the foresight to keep this land so future generations could holiday together, is enormous," says the homeowner. And despite their children and many of their cousins now having grown up and attending university, it is still the meeting place each Christmas and New Year for the entire extended family. ■



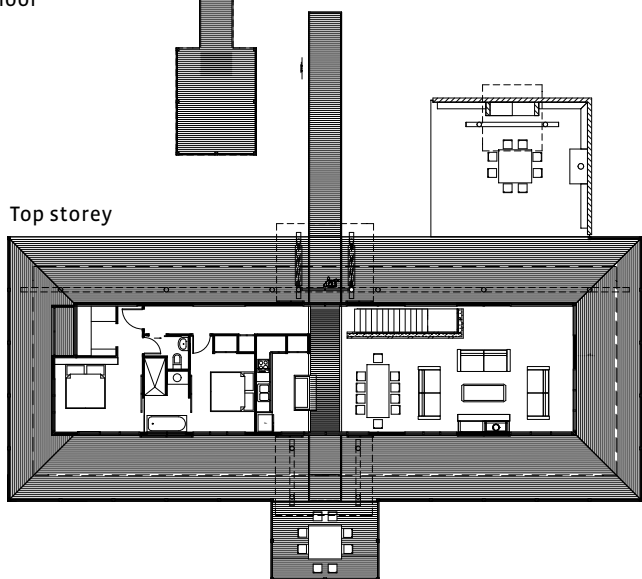
Marimekko Unikko

Homebase Collections
Holiday Taupo Periwinkle

Resene Half Linen



Ground floor



Top storey



Materials

LIGHTING The homeowners made their own steel light fittings (above) which hang above the kitchen and in the living space. They are formed from chunky checker-plate steel. An upcycled Coffee Bean Bag Lamp (left) designed by Erica Munro features in the kitchen.

STEEL BULL FIGURINE Made by farmer turned master sculptor William Jameson. It represents the bulls from the family farm.

FABRICS Patterned fabrics such as Holiday Taupo Periwinkle from Home Base Collections and Unikko from Marimekko add bold accents to the modern bach interior.

PAINT Resene Half Linen is the primary colour used throughout the home. It blends well with the timber accents, with sliding rimu doors in all the cavity spaces.

Fred Stevens Architecture Aotearoa,
07 362 8515, www.studioNZ.com
Roland Tissink, Tissink Builders,
0274 830 353, www.tissink.co.nz

